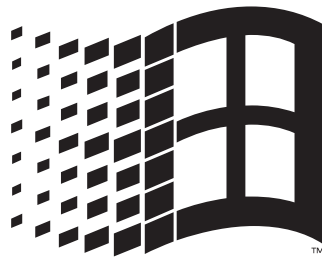




**Windows<sup>®</sup> Driver  
Installation Manual  
for  
“e” Series & CT400/410 Printers**



**Compatible Interfaces:**

- SATO IEEE1284 High-Speed Parallel •
- SATO RS232 High Speed Serial •
- SATO Enhanced Ethernet •
- SATO Enhanced USB •

## Introduction

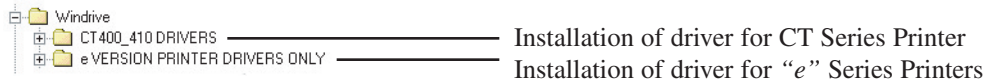
The new SATO “e” Series Printers come with a Windows® Driver that makes it easy and efficiently to produce label directly from Windows® applications such as WORD, EXCEL, ACCESS and many more. No need to learn new programs to design labels.

Please note that on the SATO “e” Series Printers, you have to use one of the following interfaces in order to make the Printer Driver/Status Monitor work properly:

- SATO IEEE1284 High-Speed Parallel •
- SATO RS232 High Speed Serial •
  - SATO Enhanced Ethernet •
  - SATO Enhanced USB •

## CD Directory

All files to install the SATO Windows Driver on your computer are located in the Windrive folder on the Label Wizard SE CD.



## Before you start:

**SATO “e” Series Printers** - The “e” Series Driver utilizes the printer’s Bi-Com4 for detailed status information. This is disabled when DIP switch 2-5 is off. Therefore, the receive buffer must be set to “Multi-Buffer” to avoid communication problems. To enable multi-buffer the DIP switch 2-5 must be set to ON (SATO “e” Series Printers only).

**Updating earlier driver** - In case you’re updating a previous driver installation, to avoid any conflicts, the “old” printer driver(s) and port drivers should be removed beforehand. This can be done by deleting those printers from the printer folder on your computer (**Start Menu --> Settings --> Printers**)

**USB** - You MUST run the  `UsbPrep.exe` (**USBPREP.EXE**) utility BEFORE you connect the printer to the PC. The file can be found on the Driver CD in the folder:

**Windrive --> CT400\_410 DRIVERS or eVERSION DRIVERS ONLY** (depending on your printer)


First you should choose **Cleanup** and then **Prepare** to copy the necessary files to your system. After that, you can connect the printer through USB and power it on. Windows® will detect the printer through Plug’n’Play installing the required “USB Device driver”.

**Note:** *Windows™ NT4 and Windows™ 95 DO NOT support the USB interface. Microsoft® recommends the use of Windows® 98/ME/2000.*

**IEEE1284** - For parallel connection, you have to use a true IEEE1284 data cable. Also, the parallel port you want to use should be an “ECP” type. Consult your computer specific documentation on instruction regarding modifying your parallel port connection.

**Serial** - In case you want to use a serial connection, you have to select “Status 4” protocol on the RS232 High Speed Serial I/F board. Therefore, DIP switch 1-7 & 1-8 (on the I/F board) must be set to ON, and DIP switch 2-8 (on the printer) must be set to OFF. Both the printers and the PC must have identical settings in order to communicate. This includes Baud Rate, Parity, stop bit, Data bit and Flow control.

## Printer Driver installation

**Step 1** - Connect the printer to the PC and power it on. Run  (PRNINST.EXE) which is part of the printer driver package. You can enter the name of the path or browse the CD:

• **Enter Path:**

Go to the Windows Start menu, click on Run and enter the path.

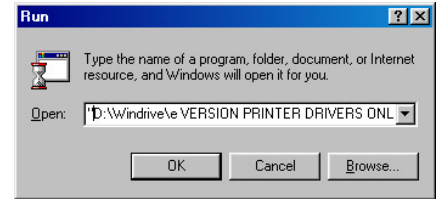
(D:\ is the drive letter of your CD ROM):

⇒ For all “e” Series Printers enter

**D:\Windrive\VERSION PRINTER DRIVERS ONLY\PrnInst.exe**

⇒ For CT Series Printers

**D:\Windrive\CT400\_410 DRIVERS\PrnInst.exe**

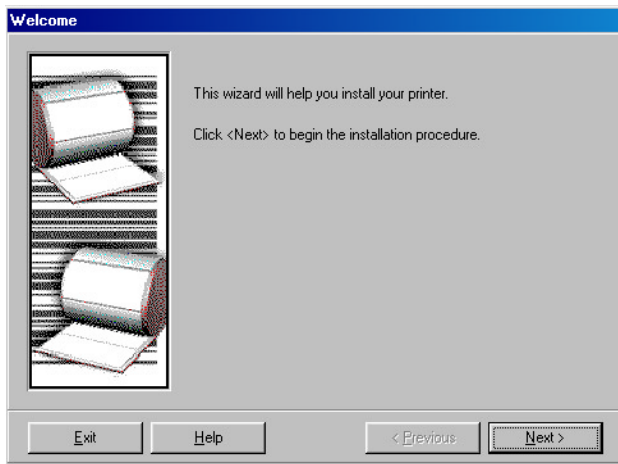


• **Browse CD:**

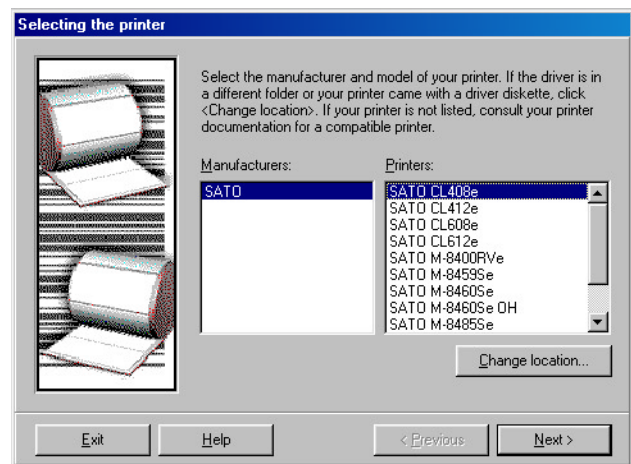
Go to the Windows Start menu and click on Run. Click on Browse and search the CD :

Windrive --> **CT400\_410 DRIVERS** or **e VERSION DRIVERS ONLY** (depending on your printer model)

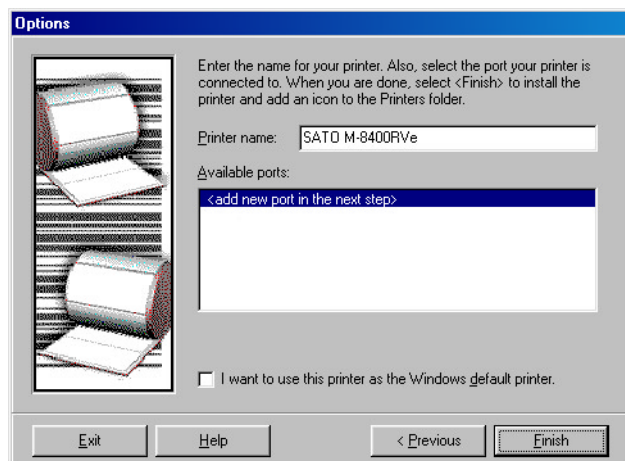
**Step 2** - The opening dialogue: Click **Next** to get to the printer selection dialogue box



**Step 3** - Choose appropriate printer and click **Next** to get to the option **Add New Port Dialogue**

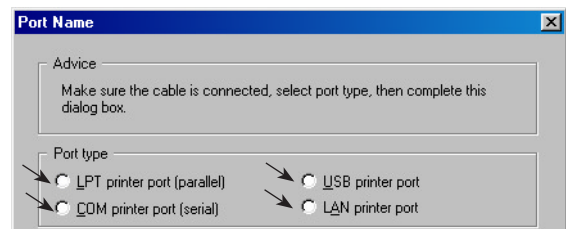


**Step 4** - The Enhanced interface needs a kind of “virtual” port. To add one select **<add new port in the printer next step>** and click **Finish**.



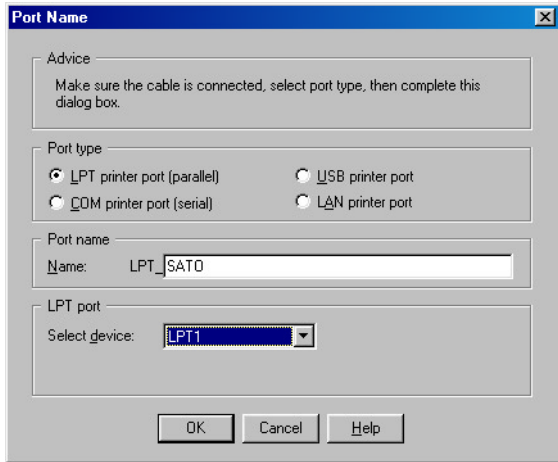
**Step 5** - Choose the interface type you would like to install. For instructions on individual interfaces see next pages.

- a) **IEEE1284 High-Speed Parallel Connection**
- b) **RS232 High Speed Serial Connection**
- c) **Enhanced Ethernet Connection**
- d) **Enhanced USB Connection**

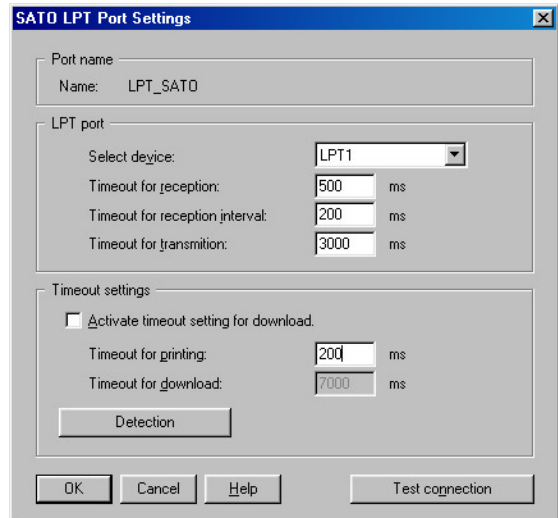


## a) Installing IEEE1284 High-Speed Parallel Connection

Under **Port type**, choose **LPT printer port (parallel)**, **Port name** should be something like **SATO** (will appear as **LPT\_SATO**) and under **LPT port** you must select the “physical” parallel port you want to use. Click **OK** to get to the next dialogue:

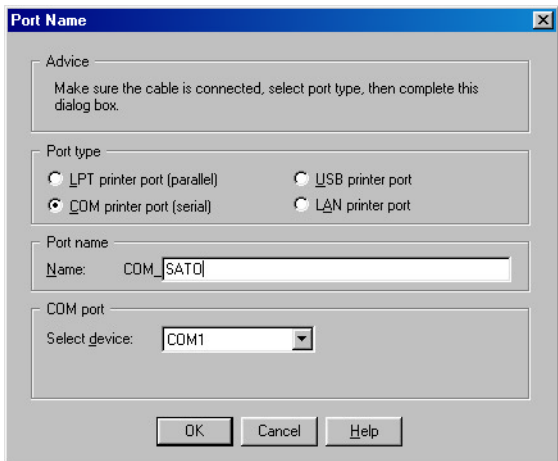


Use the default settings and click **OK** to finish the installation.



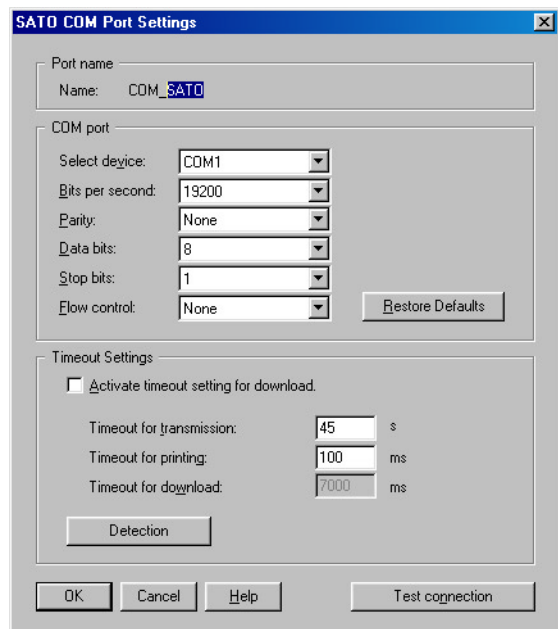
## b) Installing RS232 High-Speed Serial Connection

Under **Port type**, choose **COM printer port (serial)**, **Port name** should be something like **SATO** (which will appear as **COM\_SATO**) and under **COM port** you have to select the “physical” serial port you want to use. Click **OK** to get to the next dialogue:



Here you have to set the appropriate port parameters. Then you can click **OK** to finish.

*Note: These parameters must match the printers serial port settings.*

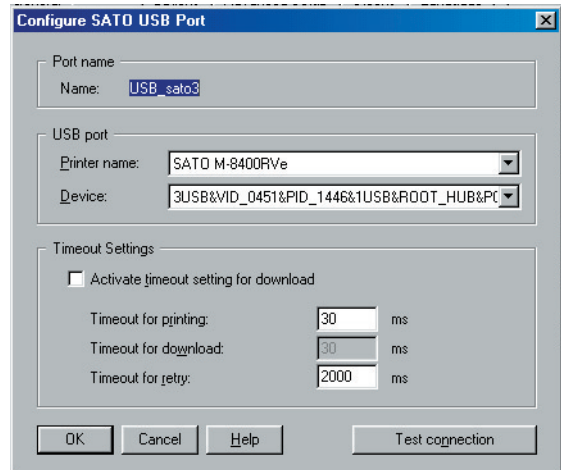
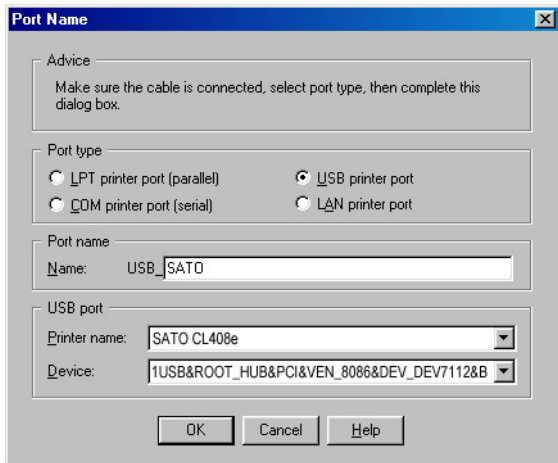


### c) Installing Universal Serial Bus (USB) Connection

Under **Port type**, choose **USB printer port**, **Port name** should be something like **SATO** (which will appear as **USB\_SATO**) and under **USB port** the printer name and the device will appear automatically. Click **OK** to get to the next dialogue:

*Note: If there is no USB port selection available the port has not been properly installed. Make sure that the printer's power is off and then run USB prep as indicated at the beginning of this manual.*

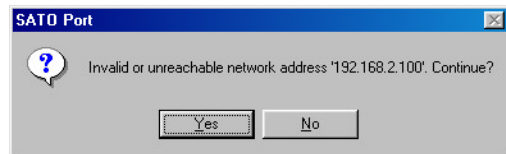
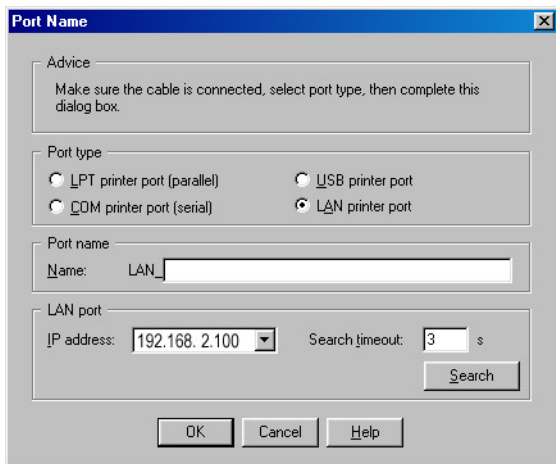
Under normal circumstances, all the default settings can be used. Click **OK** to finish the installation.



### d) Installing LAN/Ethernet Connection

Under **Port type**, you choose **LAN printer port**, **Port name** should be something like **SATO** (which will appear as **LAN\_SATO**) and under **LAN port** the printers IP address. Click **OK** to finish installation.

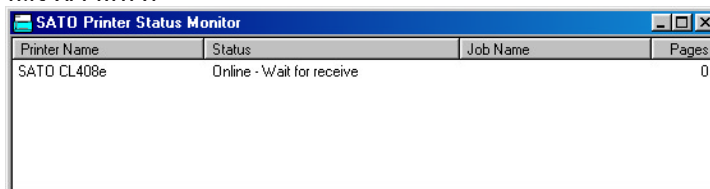
*Note: If the following error should come up. Please check if the IP address is correct. If you don't know the IP address of the printer you need to set one up using the XAdmin software supplied with the SATO Ethernet adapter. Refer to the documentation on the CD that came with the Printer and/or Ethernet Card for Instructions.*



## SATO Status Monitor

The SATO Windows Driver will report status information on real time basis to the SATO Printer Status Monitor. The Status Monitor must be running. If the Status Monitor is being run minimized, the icon will be displayed in the lower right corner of the toolbar. When a monitored error happened, the Port Monitor Screen will automatically pop up, to communicate that an event has occurred

The Printer Status Monitor is for viewing the status ONLY. No functions can be changed from this screen.



### Functions Reported on Printer Status Monitor Screen:

- |                                     |  |
|-------------------------------------|--|
| Not Ready                           | Error - Paper End (Out of Labels)        |
| Online - Waiting for receive        | Error - Sensor Error                     |
| Online - Printing                   | Error - Head Error (broken head element) |
| Job Name                            | Error - Head Open                        |
| Pages = Quantity of Labels to Print | Ribbon Near End                          |
| Paused                              | Cutter Error                             |
| Error - Ribbon End (Out of Ribbon)  |  |

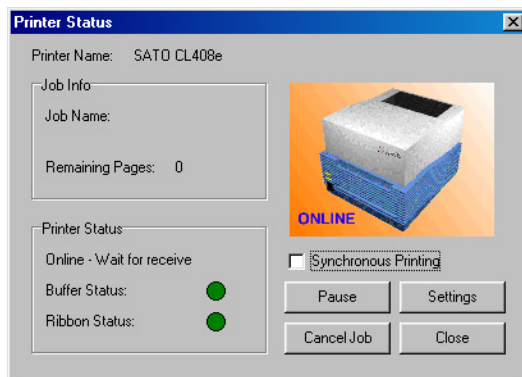
## Printer Status Screen

If you double click on the printer name the Printer Status Window opens up. From this window you can view Printer Status:

**Ready / Not Ready**

**Buffer Status:**  
Green OK / Black Full

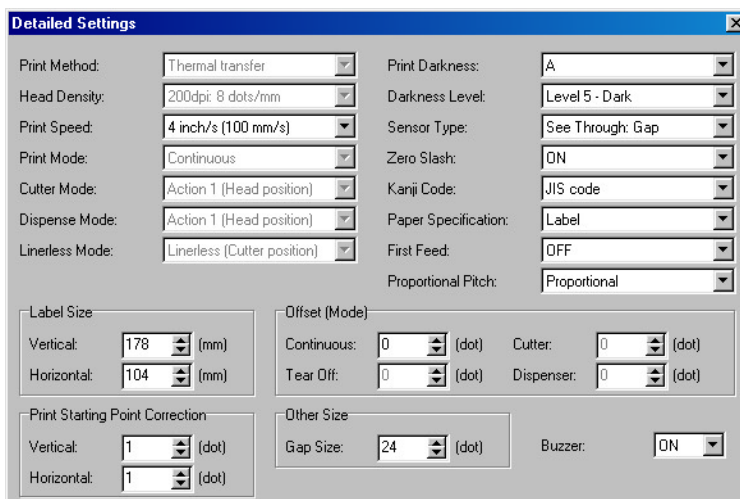
**Ribbon Status:**  
Green OK / Black Ribbon Out



- From this screen you can:
- Pause / Resume the printer**
  - Cancel Print Jobs**
  - Access Settings Screen**

Settings that can be changed

- from this window
- Print Speed**
  - Label Size**
  - Print Starting Point Correction**
  - Print Darkness**
  - Darkness Level**
  - Zero Slash**
  - Paper Specification**
  - Proportional Pitch**
  - Offset (Mode)**
  - Other Size**
  - Buzzer**



Settings that can be changed

- from the printer
- Print Method**
  - Print Mode**
  - Cutter Mode**
  - Dispense Mode**
  - Linerless Mode**
  - Sensor Type**

## **SATO America, Inc.**

545 Weddell Drive • Sunnyvale, CA 94089

Phone: (408) 745-1300 • Fax: (408) 745-1309

Web site: [www.satoamerica.com](http://www.satoamerica.com) • email: [satosales@satoamerica.com](mailto:satosales@satoamerica.com)